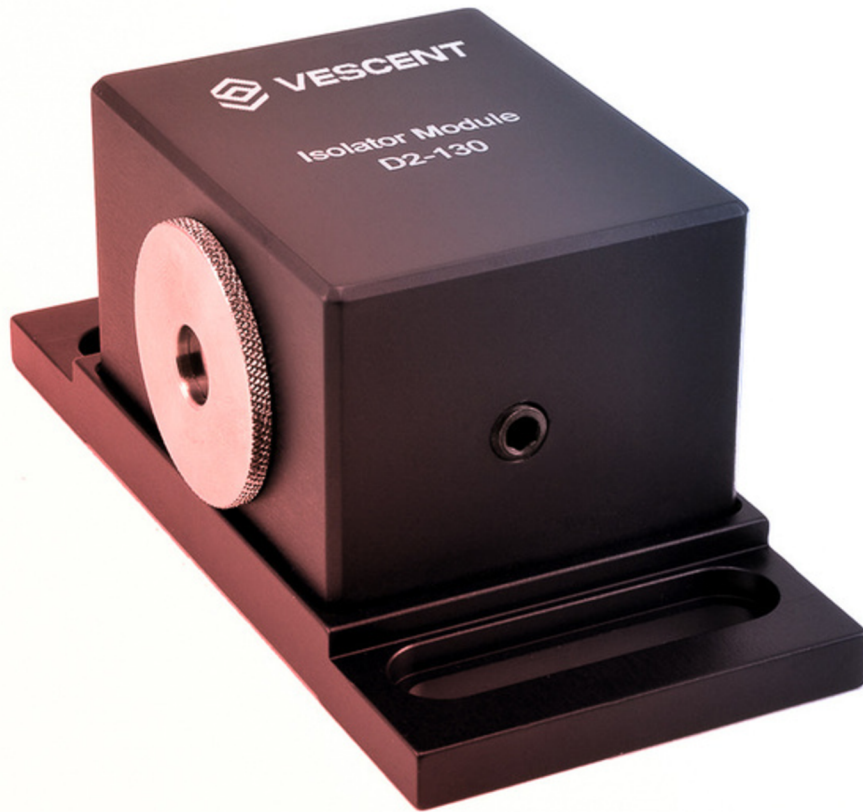


# D2-130

## Optical Isolator Module

The isolator module contains a 30 dB isolator and 1/2-wave plate in a rugged and compact package. The beam height matches other D2-series modules. The D2-130 can be used whenever extra isolation is desired, such as added isolation prior to fiber coupling.



*D2-130 Optical Isolator Module*

### Features

- >30 dB isolation
- Half-wave plate
- Compact



# D2-130 Specifications

Parameter	Value
Wavelength	760, 767, 770, 780, 785, 795, 808, 838, 852, 895, 935, 1064, 1083, 1092 (nm)
Isolation	> 30 dB